

# GRC Technology for Better Insight Into Risk

**LAMOND W. KEARSE**

Metropolitan Transportation Authority

Chief Compliance Officer



**COMPLIANCE WEEK 2014**  
POWERFUL INSIGHTS, PRACTICAL IDEAS, REAL SOLUTIONS

#CW2014

# GRC Technology for Better Insight Into Risk

## *Metropolitan Transportation Authority*

### *Who We Are*

Public Benefit Corporation

Nearly 67,000 Employees

Serving 8.5 Million Customers Daily

Transportation, Construction, Real Estate, Art, and More

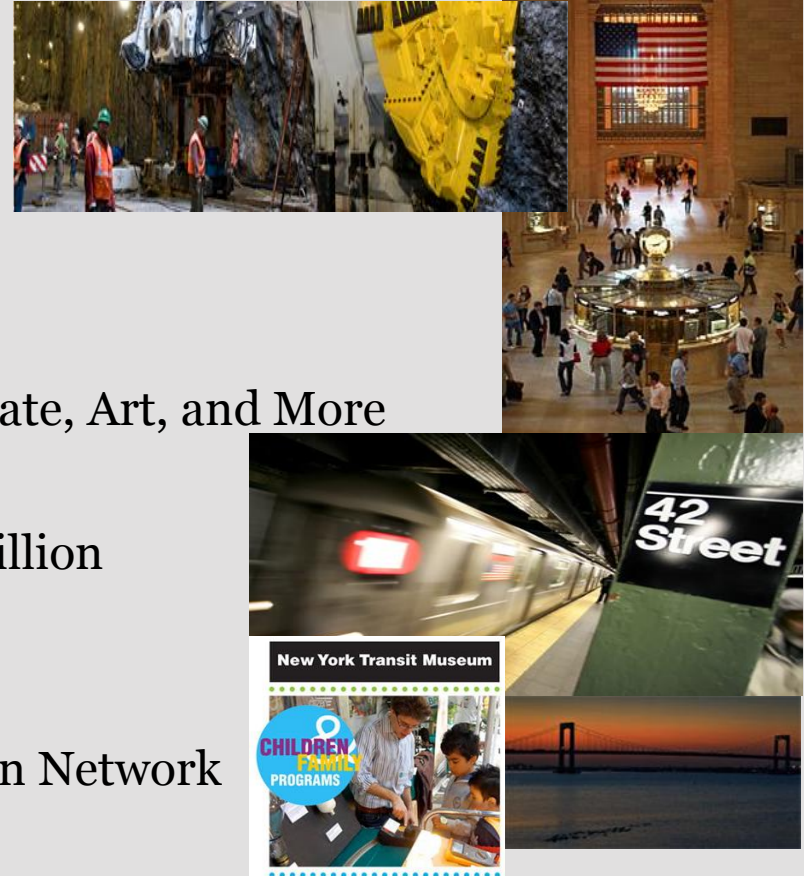
### *What It Takes*

Annual Operating Budget nearly \$13 Billion

Capital Plan: \$20+ Billion

### *Results*

North America's Largest Transportation Network



**COMPLIANCE WEEK 2014**  
POWERFUL INSIGHTS, PRACTICAL IDEAS, REAL SOLUTIONS

#CW2014

# GRC Technology for Better Insight Into Risk

MTA Board Adopts Corporate Governance Reforms Creates Chief Compliance Officer Position-2004



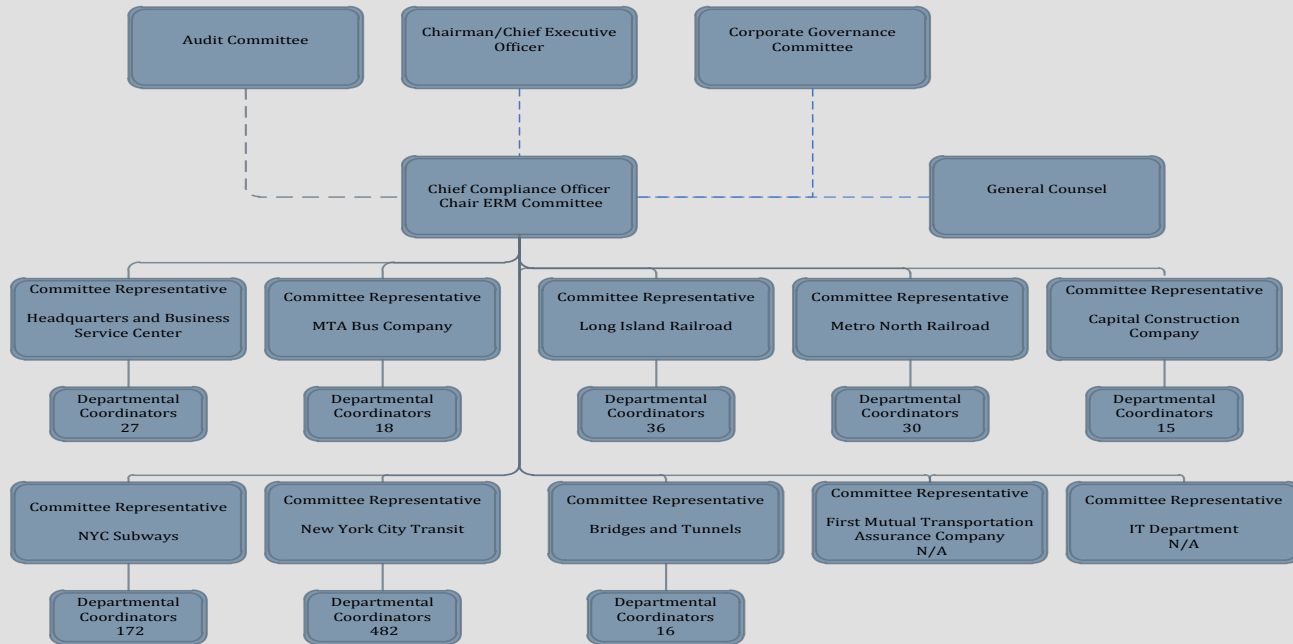
**COMPLIANCE WEEK 2014**  
POWERFUL INSIGHTS, PRACTICAL IDEAS, REAL SOLUTIONS

#CW2014

# GRC Technology for Better Insight Into Risk



## Enterprise Risk Management Structure



# GRC Technology for Better Insight Into Risk

