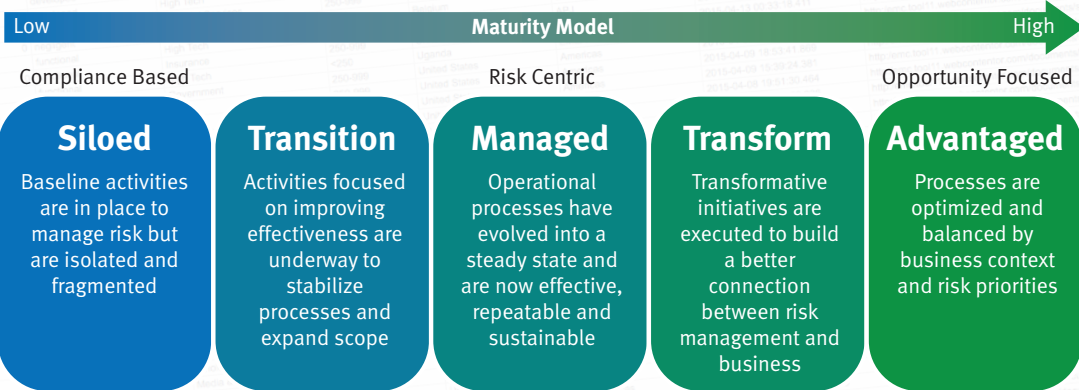


RSA® Archer™ Risk Intelligence Index

OVERVIEW

In October 2015, RSA completed a global survey of almost 400 organizations to gather insight into current trends and perceptions regarding Risk Management. The survey utilized RSA’s proprietary Risk Intelligence Index to ask questions around key areas of risk and how organizations are addressing the changing risk landscape. The Risk Intelligence Index is based on the RSA Archer Maturity Model that measures organizations’ GRC program components across five stages of maturity.



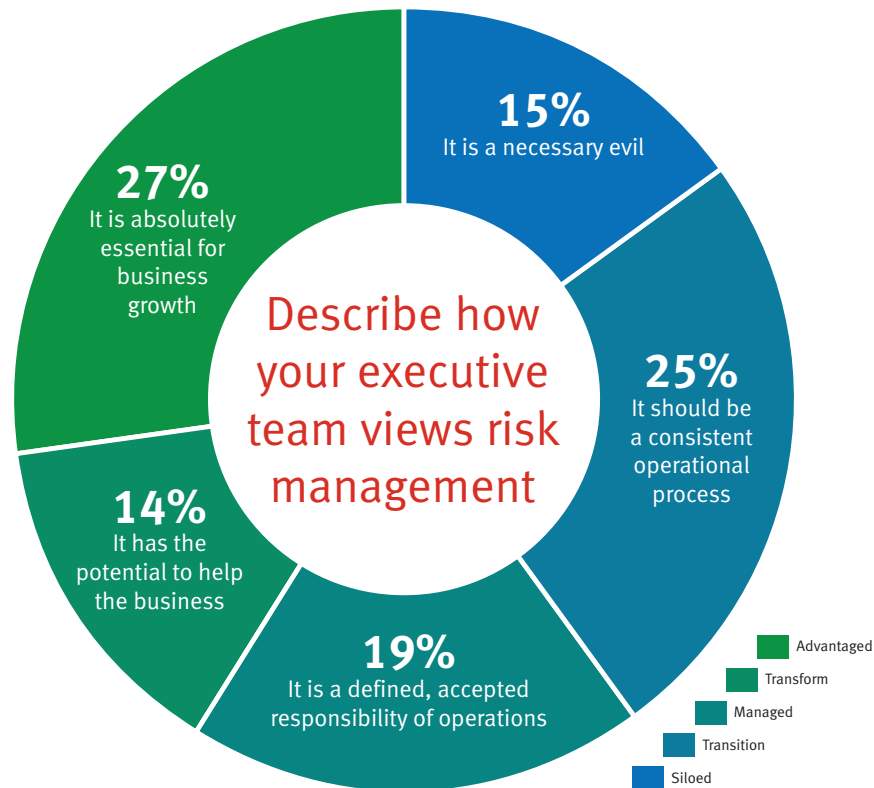
OVERALL ORGANIZATIONAL ATTITUDE TOWARDS RISK

Key Finding

Approximately **40%** of the respondents' executives view risk management as an ingredient to business success. **60%** still see risk management as an operational problem.

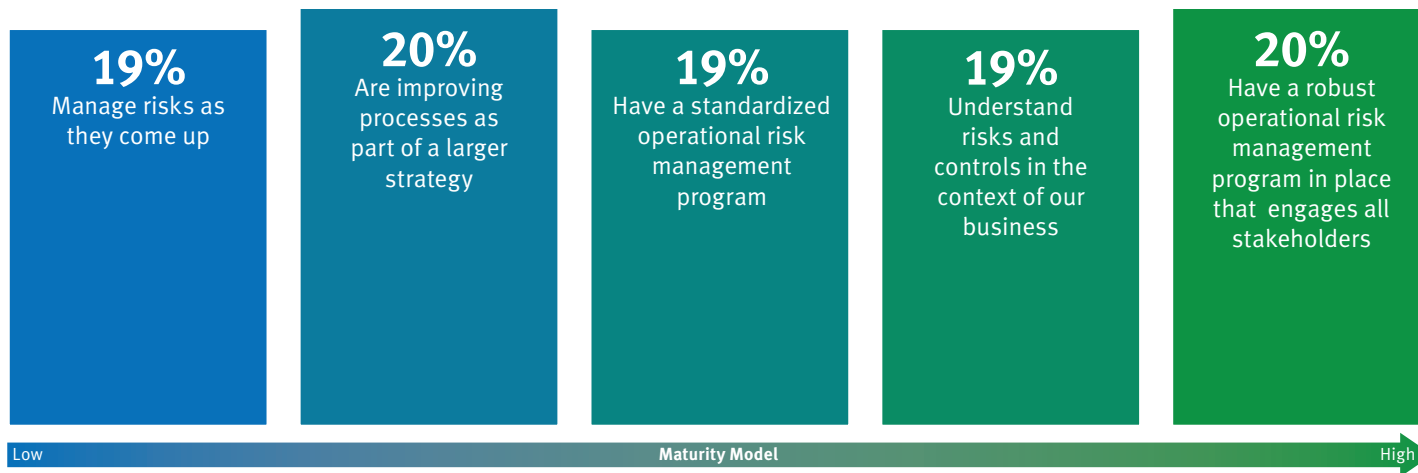
Key Recommendation

Risk Management functions need to connect every effort to the business strategy to raise awareness and educate executives on how risk management can accelerate business growth.



OPERATIONAL RISK MANAGEMENT

When it comes to managing risks within business operations, we



Key Finding

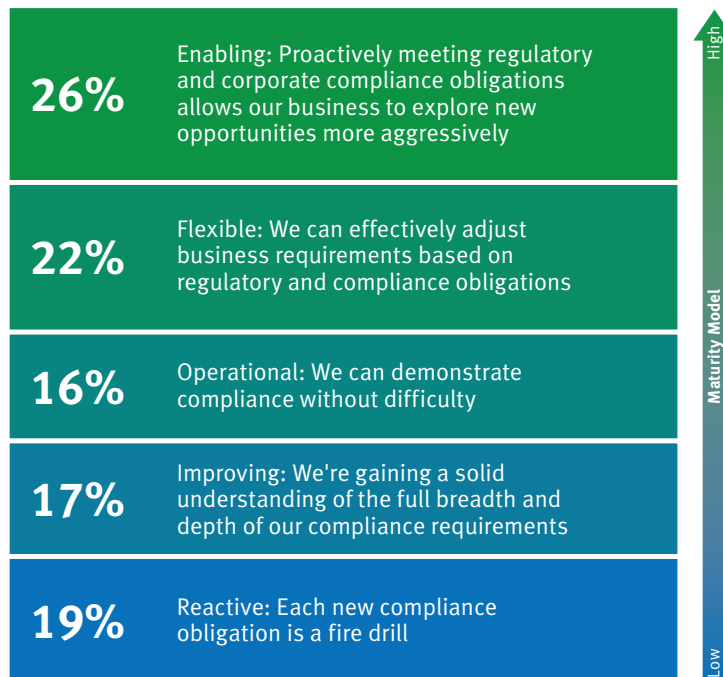
Although **4/5** of respondents have ORM in place, the survey results indicate an equal distribution of operational risk management maturities.

Key Recommendation

Organizations should strive to understand the full business context of their risks and controls to get the most out of the risk management program.

REGULATORY & CORPORATE COMPLIANCE

Our regulatory and corporate compliance efforts are:



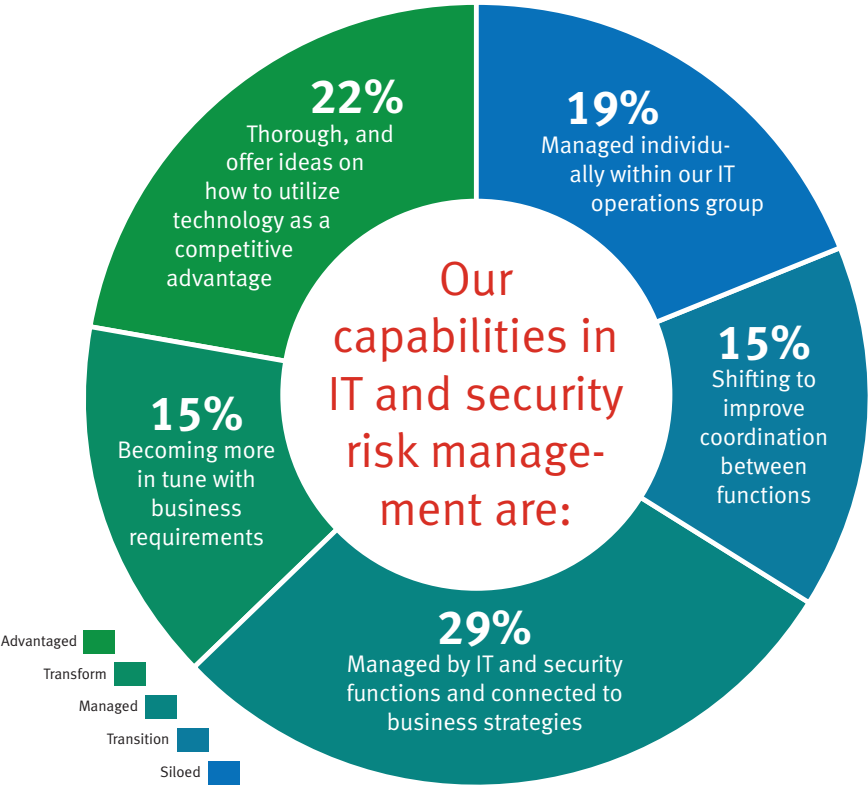
Key Finding

Respondents reported an almost equal split between respondents that are anticipating regulatory changes as those that continue to react as a compliance exercise.

Key Recommendation

Organizations should implement continuous controls monitoring in conjunction with risk-based compliance to gain program efficiencies.

IT AND SECURITY RISK MANAGEMENT



Key Finding

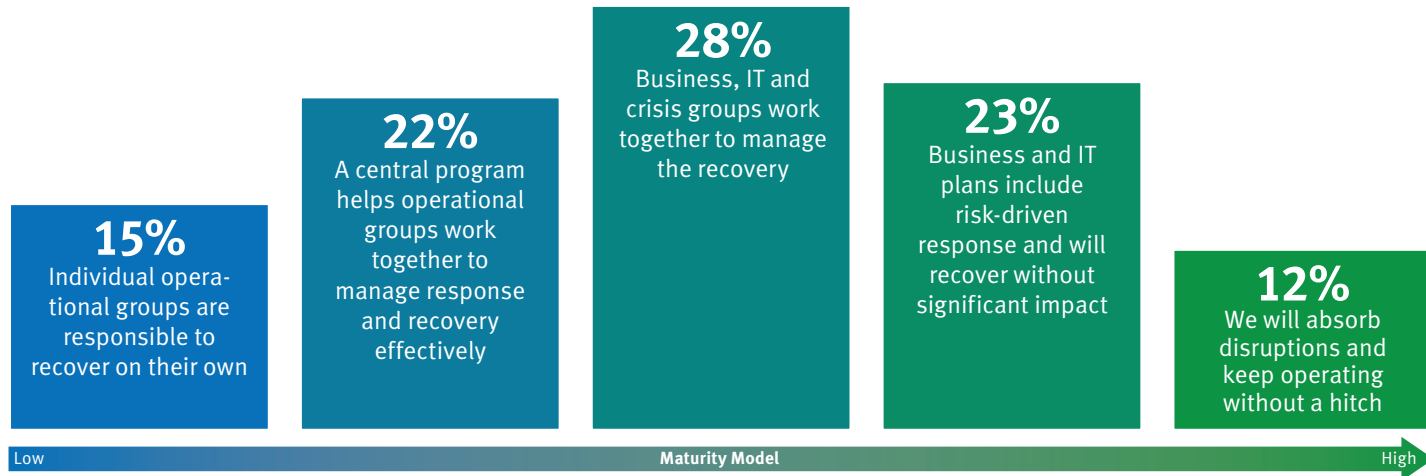
Only **22%** of the respondents indicated that they are able to use IT and Security Risk Management as a competitive advantage.

Key Recommendation

IT and Security functions should build business context around security issues and ensure IT and security risks are connected to overall operational and enterprise risk strategies.

BUSINESS RESILIENCY

If there is a disruption within business operations:



Key Finding

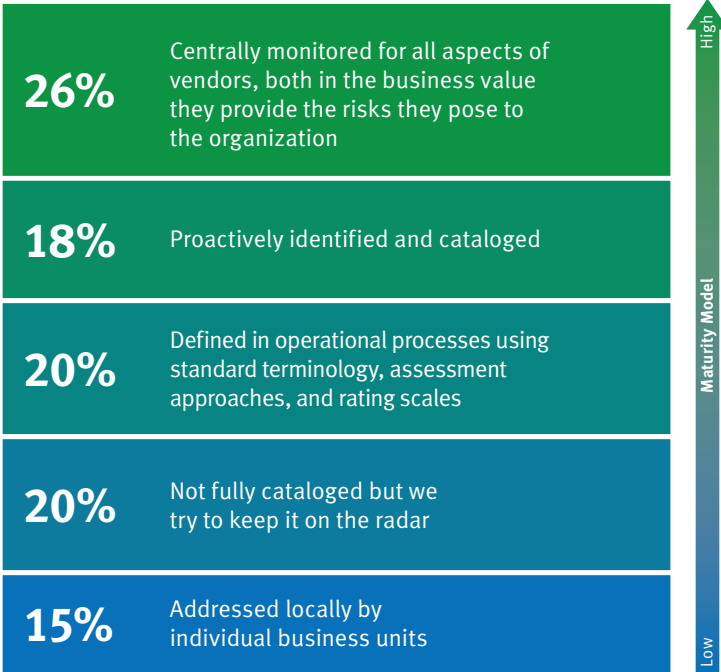
85% of the respondents have a central or coordinated program for recovery, but only **1/3** indicate true confidence in managing their business resiliency risk.

Key Recommendation

To drive confidence in resiliency, organizations need to have a central program, collaboration among recovery functions, and take risk-based approaches.

THIRD PARTY GOVERNANCE

Third-party risk is:



Key Finding

Third party risk is one of the fastest rising issues and **1/3** of the respondents indicate low maturity in addressing third party risk.

Key Recommendation

Organizations with low maturity should establish a maturity roadmap and engage stakeholders across the organization in the third-party governance program.

AUDIT MANAGEMENT

Key Finding

77% of respondents reported that their audit activities were risk-based to adjust based on business changes.

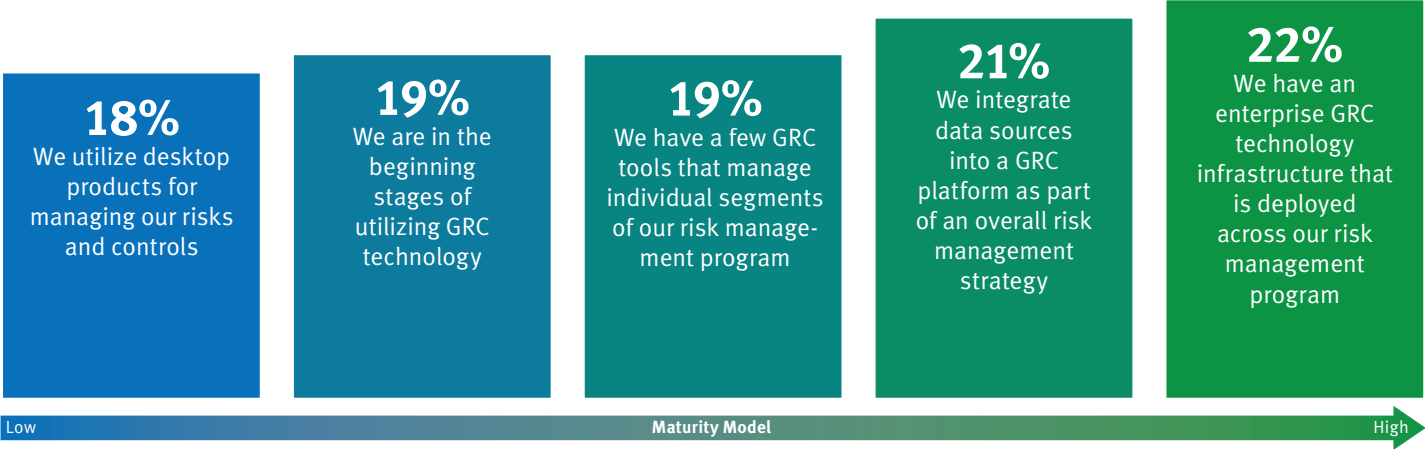
Key Recommendation

Internal Audit (IA) should leverage insight from Enterprise and Operational Risk Management to dynamically adjust audit plans and engagements in response to changing business conditions.



GRC TECHNOLOGY USAGE

Describe how technology supports your GRC program:



Key Finding

Respondents indicate there is still a wide variety of maturities in utilizing technology to support the GRC program.

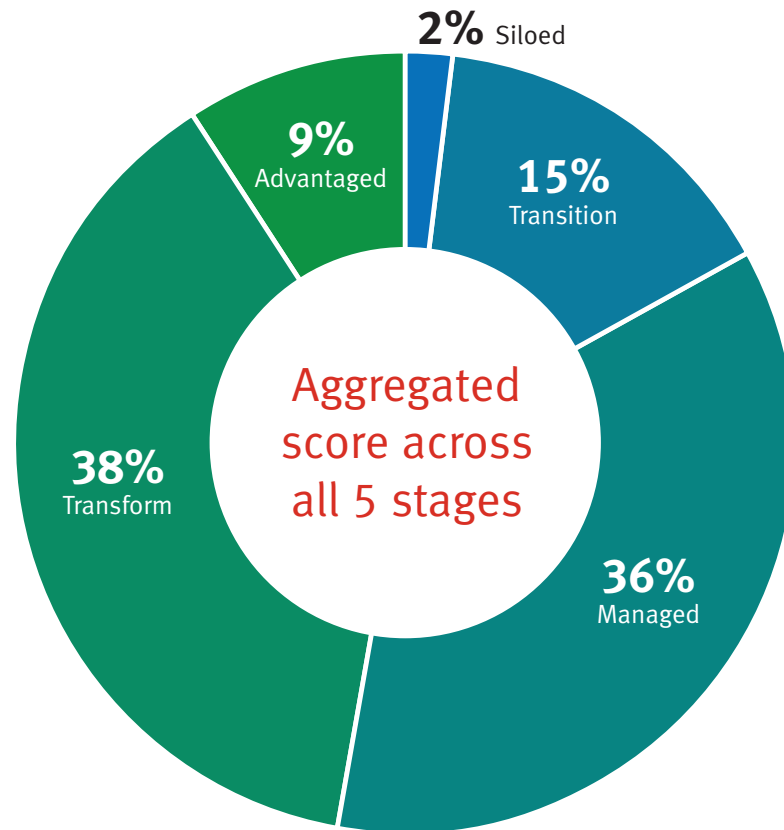
Key Recommendation

Organizations must look for an integrated technology strategy to create a cohesive picture of risk.

OVERALL RISK INTELLIGENCE MATURITY

Due to pressures from boards and executives, organizations are actively looking to drive more mature Risk Management programs but **less than 10%** of respondents reached the most mature state in RSA's Risk Maturity Index. All respondents noted at least one dimension of risk management that needed improvement.

Facing a more volatile risk environment, organizations must continue to improve GRC initiatives to transform compliance, focus more on risk, and ultimately help the business drive growth.





EMC², EMC, the EMC logo, RSA, and the RSA logo are registered trade marks or trademarks of EMC Corporation in the United States and other countries. © Copyright 2015 EMC Corporation. All rights reserved.
Published in the USA. 10/15 eBook
H14635

